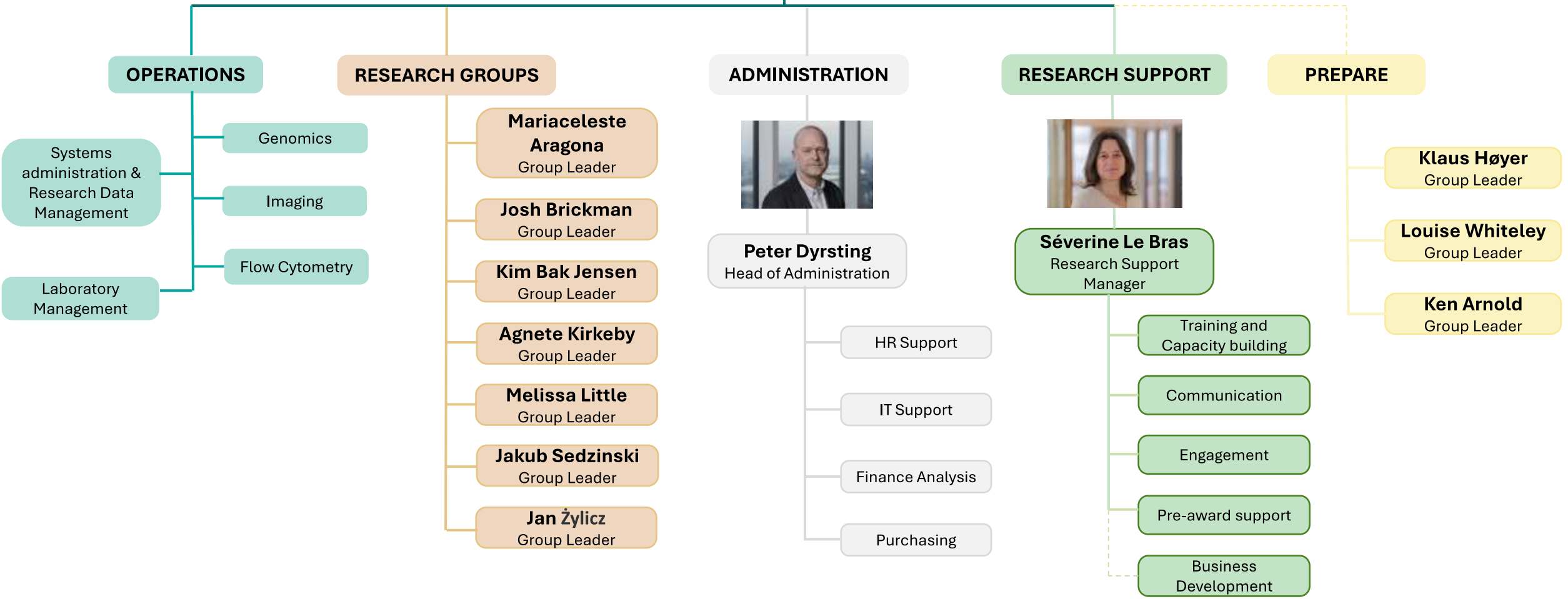




**Melissa Little**  
Deputy Node Director



**Kim Bak Jensen**  
Executive Director



**OPERATIONS**

Systems administration & Research Data Management

Laboratory Management

Genomics

Imaging

Flow Cytometry

**RESEARCH GROUPS**

**Mariaceleste Aragona**  
Group Leader

**Josh Brickman**  
Group Leader

**Kim Bak Jensen**  
Group Leader

**Agnete Kirkeby**  
Group Leader

**Melissa Little**  
Group Leader

**Jakub Sedzinski**  
Group Leader

**Jan Żylicz**  
Group Leader

**ADMINISTRATION**



**Peter Dyrsting**  
Head of Administration

HR Support

IT Support

Finance Analysis

Purchasing

**RESEARCH SUPPORT**



**Séverine Le Bras**  
Research Support Manager

Training and Capacity building

Communication

Engagement

Pre-award support

Business Development

**PREPARE**

**Klaus Høyer**  
Group Leader

**Louise Whiteley**  
Group Leader

**Ken Arnold**  
Group Leader